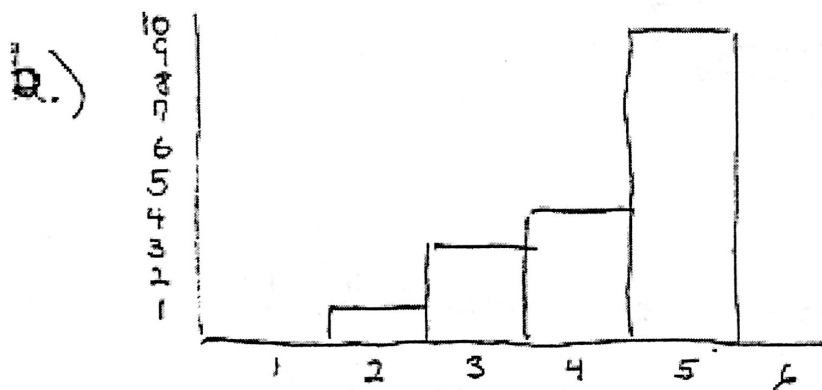


4) Reading Comprehension Scores for 3rd grade class of 18 students:



a.)

X	f
5	10
4	4
3	3
2	1

- c) 1) Distribution is negatively skewed
2) As a whole, the class is much above average

6) a) $N = 14$ b.) $\sum X = 33$

X	f	Fx
4	2	8
3	4	12
2	5	10
1	3	3
<hr/>		
N=14		$\sum X = 33$

9) $N = \sum f = 13$ $\sum X = 38$ $\sum X^2 = 128$

X	f	Fx
5	1	5
4	3	12
3	5	15
2	2	4
1	2	2

$\sum F = 1 + 3 + 5 + 2 + 2 = 13$

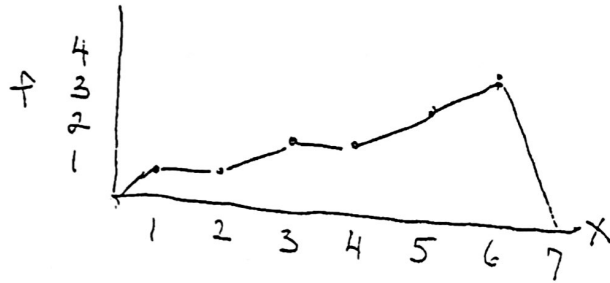
$\sum X = \sum Fx = 5 + 12 + 15 + 4 + 2 = 38$

$\sum X^2 = 5^2 + 4^2 + 4^2 + 4^2 + 3^2 + 3^2 + 3^2 + 3^2 + 3^2 + 2^2 + 2^2 + 1^2 + 1^2 = 128$

(12) a)

X	T
6	4
5	3
4	2
3	2
2	1
1	1

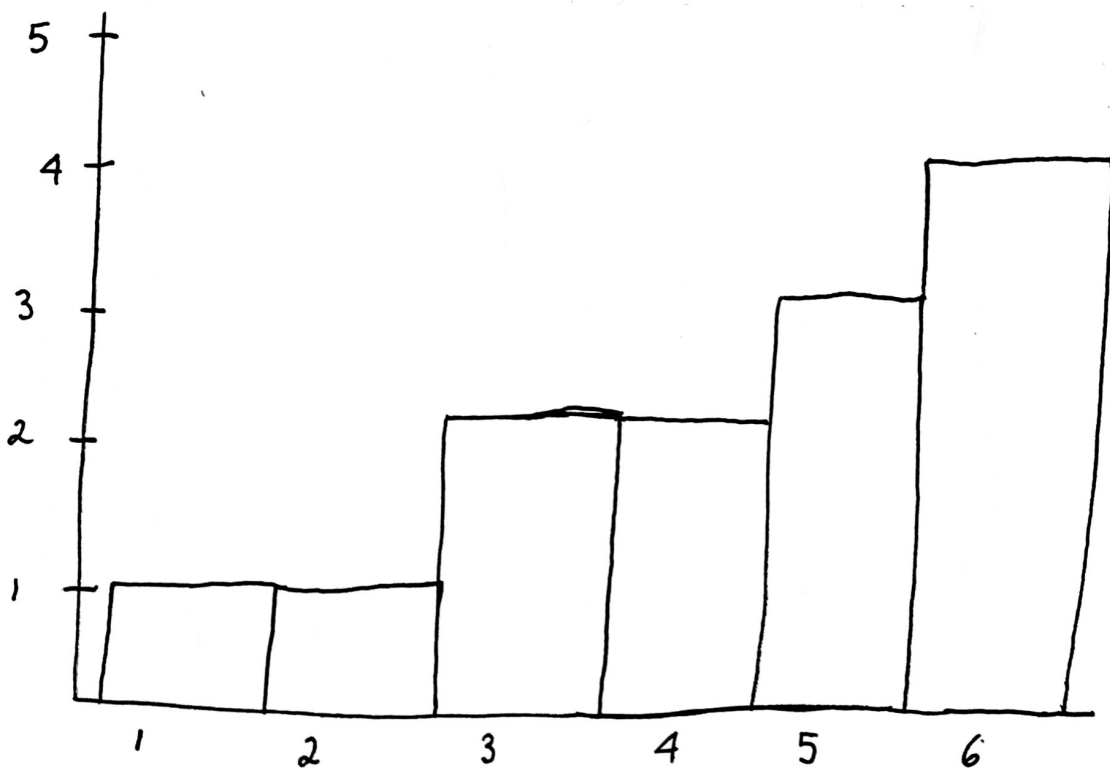
b)



c)

- 1) Distribution is negatively skewed
- 2) Scores are centered around $X=4$ or $X=5$
- 3) The scores are piled up around $X=5$ or $X=6$, but they are spread across the entire scale

d)



(11)

a)

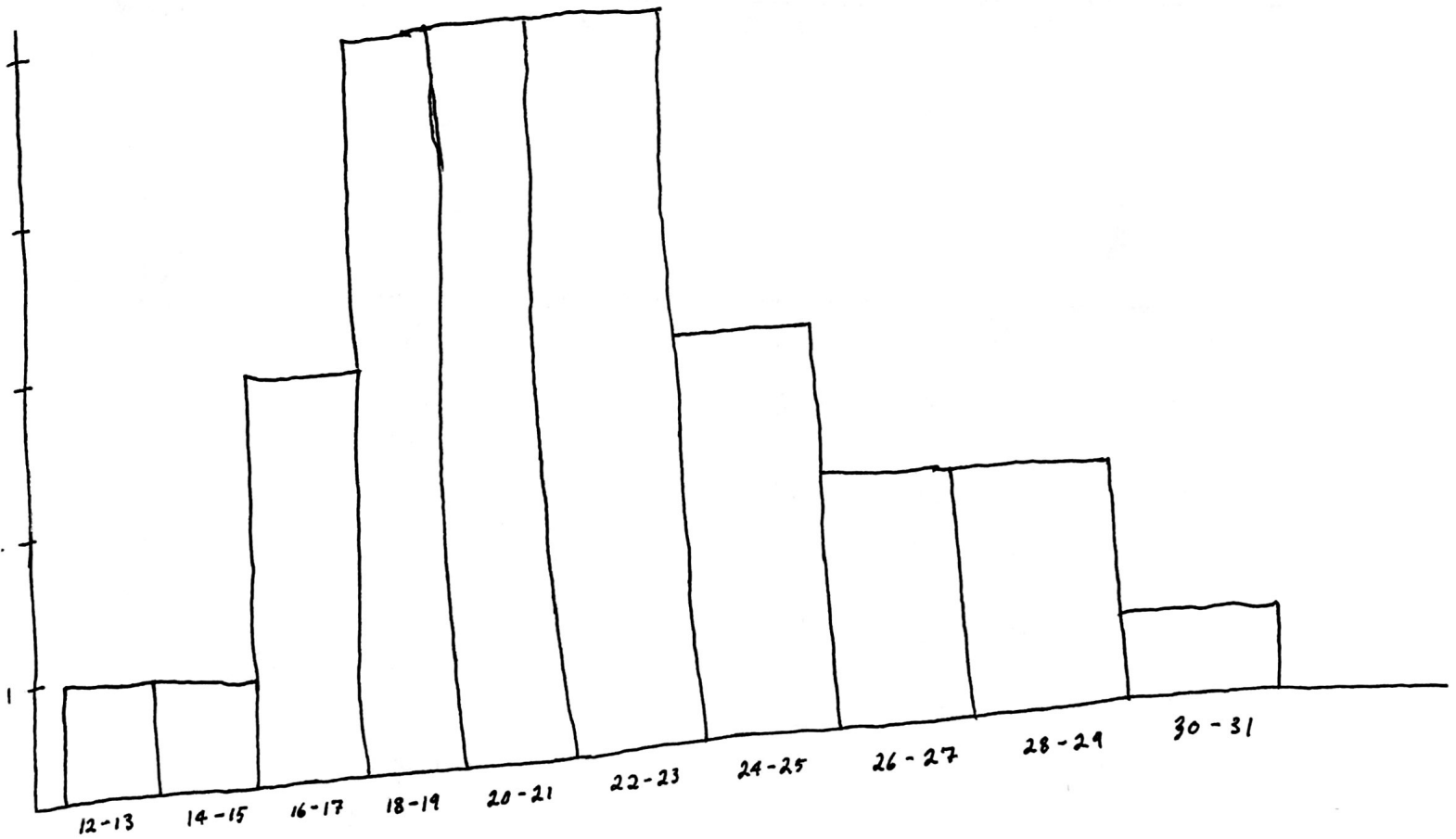
X	f
30-31	1
28-29	2
26-27	2
24-25	3
22-23	5
20-21	5
18-19	5
16-17	3
14-15	1
12-13	1

b)

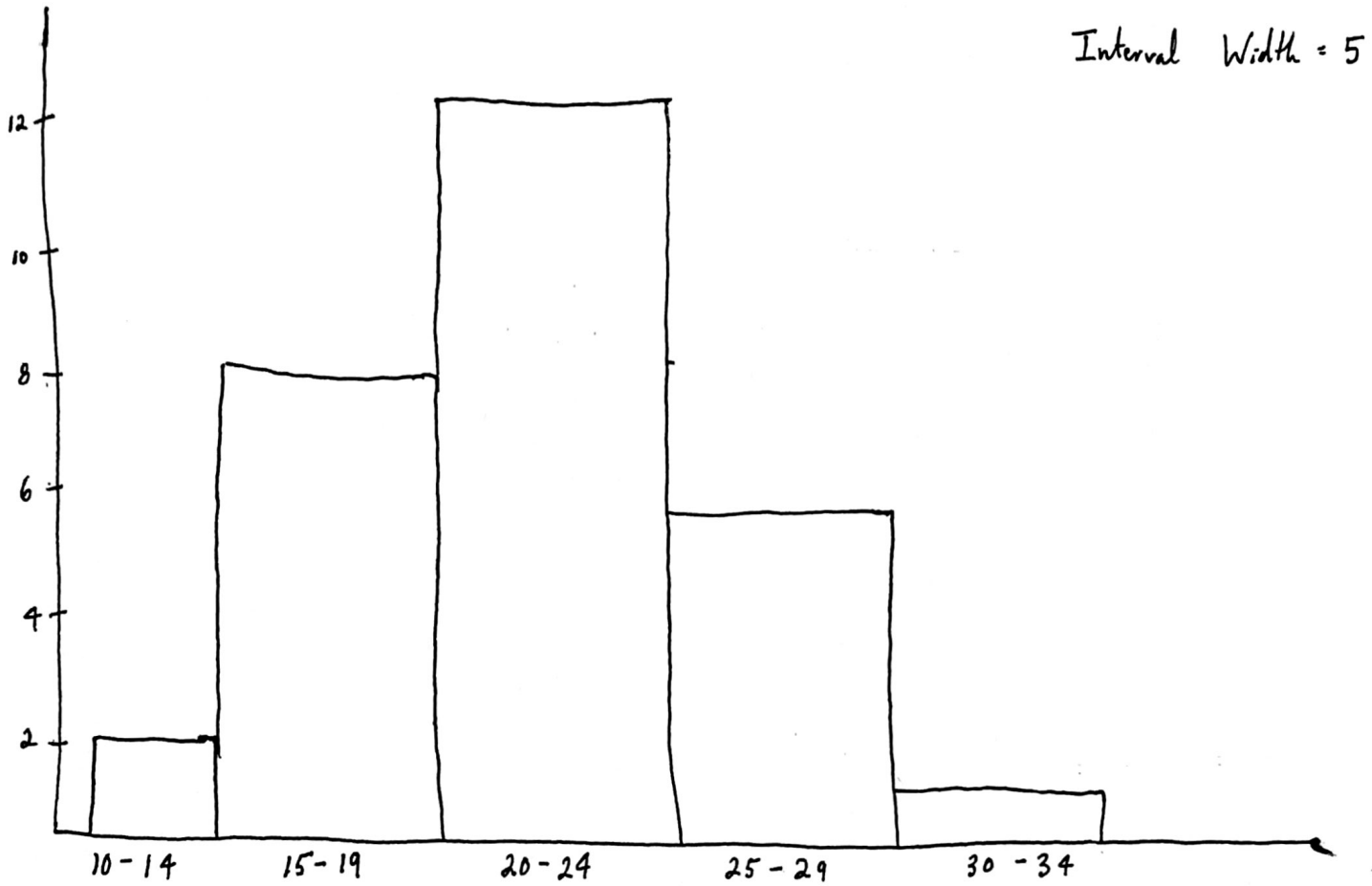
X	f
30-34	1
25-29	5
20-24	12
15-19	8
10-14	2

c)

Interval Width = 2



c) Cont.



20

X	F	cf	 	C%
5	7	25	$\frac{25}{25} = 1.00$	100%
4	8	18	$\frac{18}{25} = .72$	72%
3	5	10	$\frac{10}{25} = .40$	40%
2	3	5	$\frac{5}{25} = .20$	20%
1	2	2	$\frac{2}{25} = .08$	8%